



## Part List

Part No.	Name	Material	Quantity
1	Eccentric strap	C.I.	1
2	Eccentric strip	C.I.	1
3	Sheave	C.I.	1
4	Strap bolt	M.S.	2
5	Packing strip	Leather	2
6	Nut	M.S.	2
7	Nut	M.S.	2

\*\*\*\*\*

FIRSTRANKER

Code.No: 07A4EC06

R07

SET-2

**II B.TECH – II SEM EXAMINATIONS, DECEMBER - 2010****MACHINE DRAWING  
(COMMON TO ME, MCT, MEP, AME)****Time: 3hours****Max.Marks:80****Answer any two questions from Part A  
And Part B is compulsory**

---

**Part – A**

1. Draw at least four types of set screws. [15]
2. Draw sectional front view and top view of the Knuckle Joint with D as 30 mm. [15]
3. Draw sectional front view and top view of the double riveted, zig zag lap joint with dia of rivet as 18 mm. [15]

**Part – B**

4. Draw sectional front view and Right side view of the assembled lathe tail stock from the given figure and part list. [30+20]

**Part List**

Part No.	Name	Material	Quantity
1	Tail-stock body	C.I.	1
2	Hand wheel	C.I.	1
3	Barrel	C.I.	1
4	Spindle	M.S.	1
5	Spindle bearing	C.I.	1
6	Centre	Cast steel	1
7	Nut	M.S.	1
8	Feather	M.S.	1
9	Set screw	M.S.	1
10	Key	M.S.	1



Code.No: 07A4EC06

R07

SET-3

**II B.TECH – II SEM EXAMINATIONS, DECEMBER - 2010****MACHINE DRAWING  
(COMMON TO ME, MCT, MEP, AME)****Time: 3hours****Max.Marks:80****Answer any two questions from Part A  
And Part B is compulsory**

- - -

**Part – A**

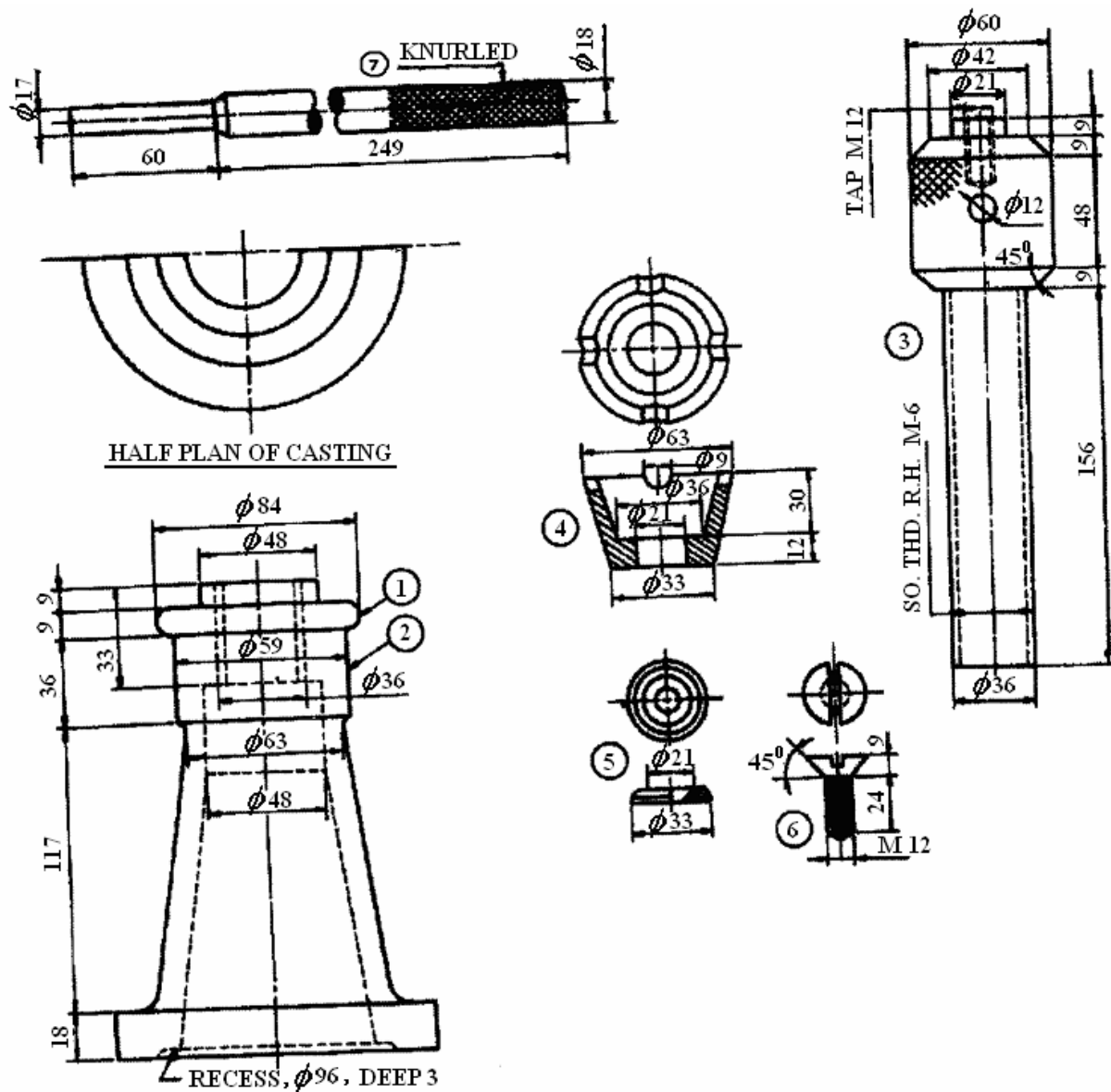
1. Draw front view and side view of a hexagonal headed bolt with a nut and a washer in position with of bolt as 30 mm. [15]
2. Draw two views of bushed types flanged coupling with D = 30 mm. [15]
3. Show that at least four types of rivet heads with D = 20 mm. [15]

**Part – B**

4. Draw the sectional front view and top view of the assembled screw Jack from the given figure and part list. [30+20]

**Part List**

Part No.	Name	Material	Quantity
1	Casting	C.I.	1
2	Nut	Gun metal	1
3	Screw	M.S.	1
4	Cup	Cast steel	1
5	Washer	M.S.	1
6	Set screw	M.S.	1
7	Tommy bar	M.S.	1



\*\*\*\*\*

Code.No: 07A4EC06

R07

SET-4

**II B.TECH – II SEM EXAMINATIONS, DECEMBER - 2010****MACHINE DRAWING  
(COMMON TO ME, MCT, MEP, AME)****Time: 3hours****Max.Marks:80****Answer any two questions from Part A  
And Part B is compulsory**

- - -

**Part – A**

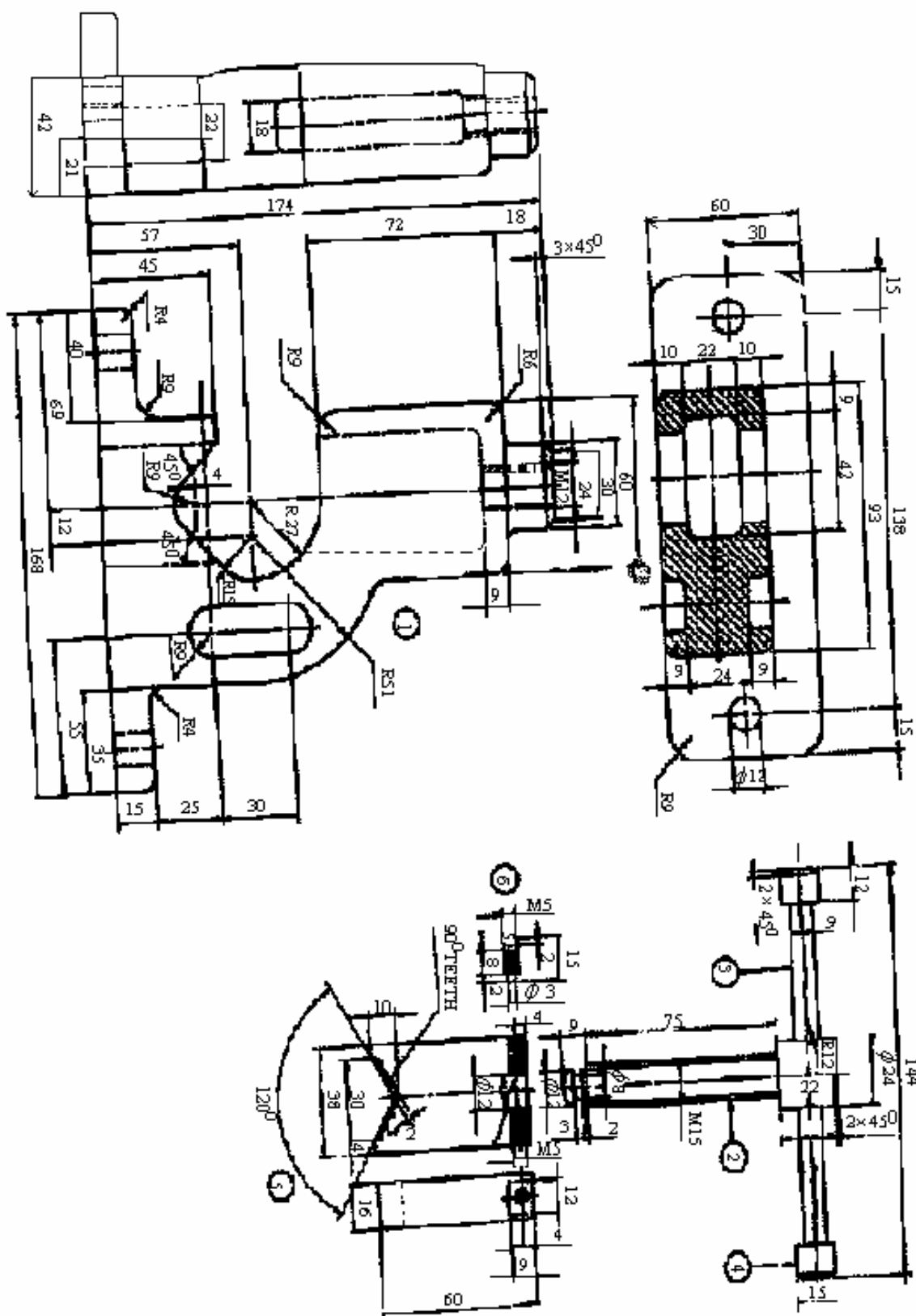
1. Indicate left handed and right handed threads both internal and external. [15]
2. Draw two views of hexagonal headed bolt and nut and square headed bolt along with nut. (D = 30 mm). [15]
3. Draw sectional front view and top view of double riveted, zig zag joint with dia of rivet as 10 mm. [15]

**Part – B**

4. Draw the sectional front view and top view of the assembled pipe vice from the given figure and part list. Also draw its left side view. [30+20]

**Part List**

Part No.	Name	Material	Quantity
1	Housing	C.I.	1
2	Handle screw	M.S.	1
3	Handle bar	M.S.	1
4	Handle bar bush	M.S.	1
5	Jaw	C.I.	1
6	Set screw	M.S.	2



\*\*\*\*\*